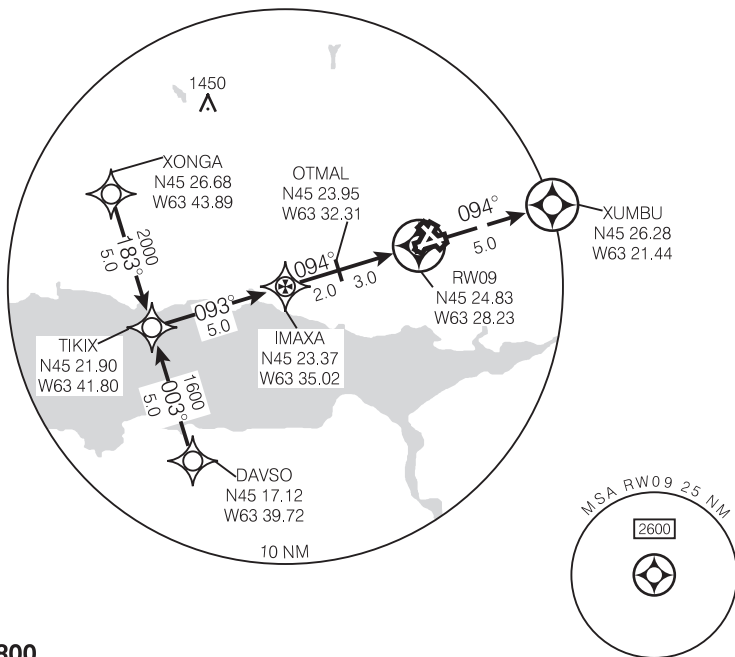


RNAV (GNSS) RWY 09

ARR HALIFAX 119.2	UNICOM 123.0 (ATF 5 NM) O/T TFC 123.0	DEP HALIFAX 119.2	ELEV 142
			TDZE 09 142

Use Halifax Intl.
altimeter setting.

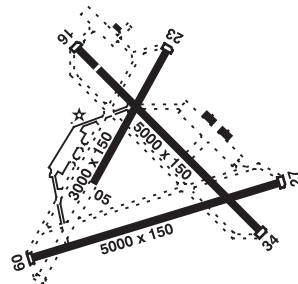
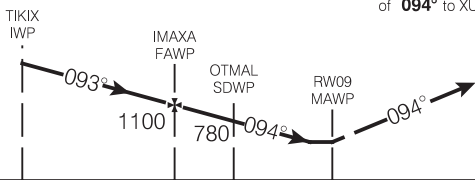
CCQ3



SAFE ALT 100 NM **2800**

MISSED APPROACH
Climb to **2500** on track
of **094°** to XUMBU.

ARCAL 123.0 (J) (see CFS)



CATEGORY	A		B		C		D	
LNAV / VNAV	NOT AUTHORIZED							
LNAV	660		(518)		1 ½			
CIRCLING	780 (638)		2		820 (678) 2		920 (778) 2 ¼	

Knots	70	90	110	130	150
Min:Sec					

RNAV (GNSS) RWY 09

452507N 632738W

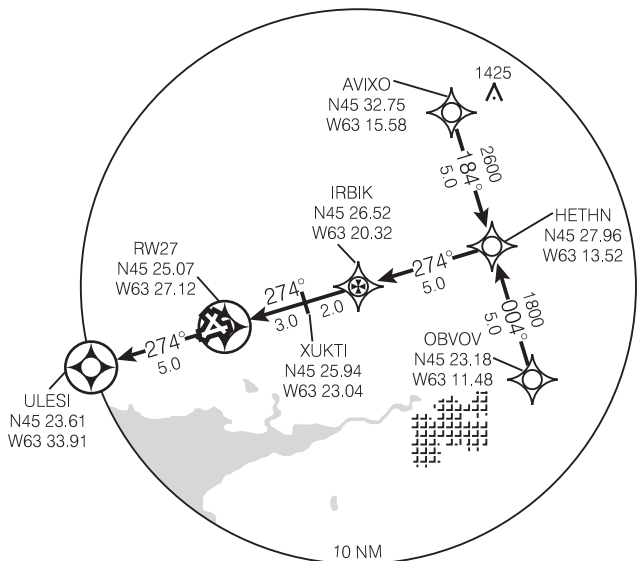
VAR 21° W (1999)

RNAV (GNSS) RWY 27

ARR HALIFAX 119.2	UNICOM 123.0 (ATF 5 NM) O/T TFC 123.0	DEP HALIFAX 119.2	ELEV 142
			TDZE 27 142

Use Halifax Intl. altimeter setting.

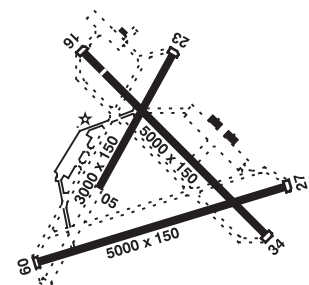
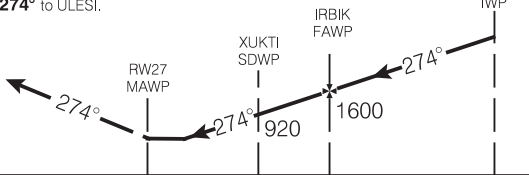
CCQ3



SAFE ALT 100 NM **2800**

MISSED APPROACH
Climb to **2500** on track of **274°** to ULESI.

ARCAL 123.0 (J) (see CFS)



CATEGORY	A				B		C		D	
LNAV / VNAV	NOT AUTHORIZED									
LNAV	660		(518)		1 ½					
CIRCLING	780		(638)		2		820		(678) 2	
							920		(778) 2 ½	

Knots	70	90	110	130	150
Min:Sec					

RNAV (GNSS) RWY 27

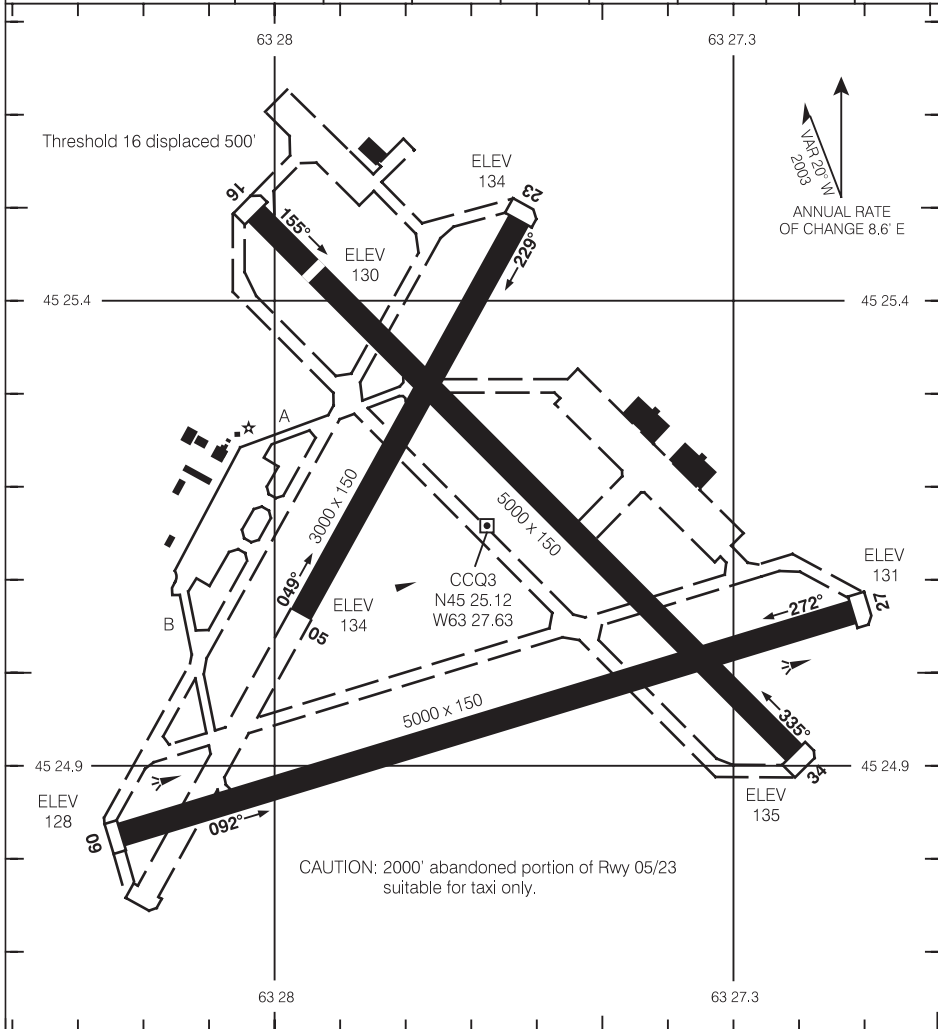
452507N 632738W

VAR 21° W (1999)

AERODROME CHART

UNICOM 123.0 (ATF 5 NM) O/T TFC 123.0	DEP HALIFAX 119.2
--	--------------------------------

DECLARED DISTANCES	05	09	16	23	27	34
TORA	3000	5000	5000	3000	5000	5000
TODA	3000	5000	5000	3000	5000	5000
ASDA	3000	5000	5000	3000	5000	5000
LDA	3000	5000	4500	3000	5000	5000



Source of Canadian Civil Aeronautical Data : © 2012 NAV CANADA. All rights reserved

TAKE-OFF MINIMA
Rwys 09, 27: ½ Rwys 05, 16, 23, 34: NOT ASSESSED



AERODROME CHART